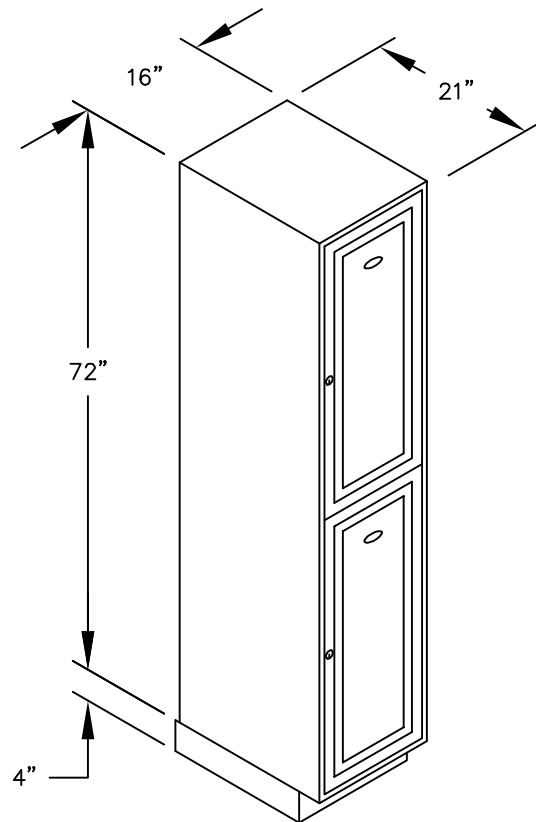


(NOTE: SOLID OAK EXECUTIVE  
LOCKER SHOWN WITHOUT SIDE  
PANEL OR CROWN MOLDING.  
PLEASE ORDER SEPARATELY.)

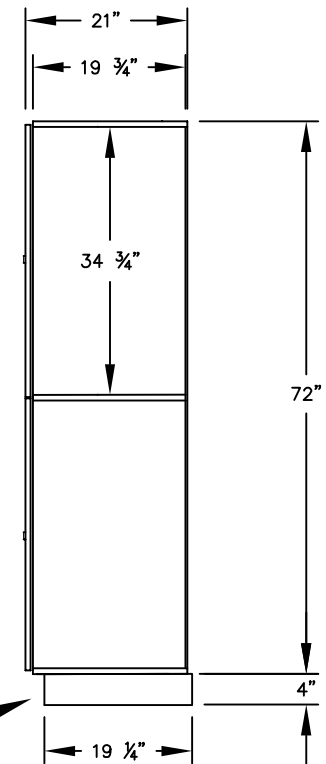


MODEL #12161  
DOUBLE TIER SOLID OAK  
EXECUTIVE LOCKER – 1 WIDE

(2) LOCKER COMPARTMENTS  
EACH COMPARTMENT:  
14  $\frac{3}{4}$ " W x 34  $\frac{3}{4}$ " H x 19  $\frac{3}{4}$ " D

(BASES ARE MADE OF INDUSTRIAL GRADE  
PARTICLEBOARD AND ARE COVERED IN A  
DURABLE BLACK LAMINATE. PLEASE SET  
BASE TO ALLOW  $\frac{5}{8}$ " BETWEEN THE BACK OF  
THE LOCKER AND THE WALL FOR AIR  
VENTILATION.)

### SIDE VIEW



MODEL #12161

21" DEEP DOUBLE TIER  
SOLID OAK EXECUTIVE LOCKER  
SIX FEET HIGH (ADD 4" FOR BASE)

AVAILABLE FINISHES:  
LIGHT OAK, MEDIUM OAK, DARK OAK

DRAWN: 03/12

***Established in 1936, Salsbury Industries  
is the industry leader in manufacturing and distributing  
quality lockers and storage solutions.***